

WOVEN WALLS

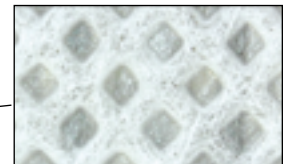
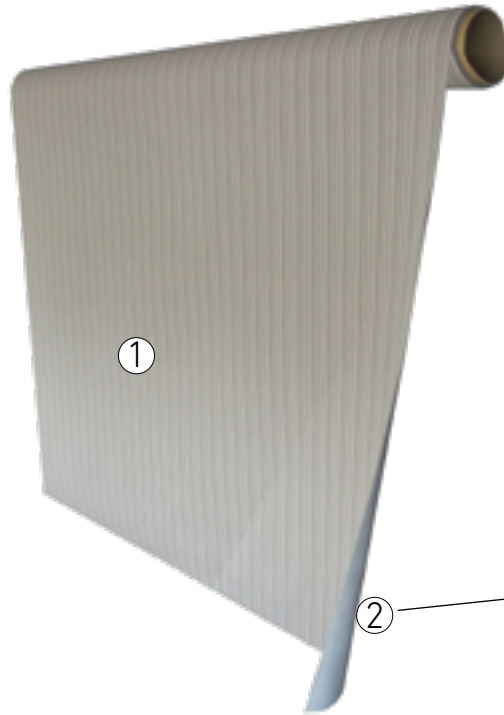
ORIGINAL COLLECTION

TECHNICAL DATA SHEET



ONLY FOR WALLS

- ① Woven Vinyl:
 - 90% PVC,
 - 6,2% Polyester,
 - 3,8% Glassfiber
- ② Non Woven
 - 100% polyester backing



OPTIONAL
Ez Care coating

Characteristics	Test	Woven Walls (Original Range)
Roll width	-	1 m
Roll Length	-	15 m
Thickness	-	From 1,5 to 1,8 mm (depending on the pattern)
Weight	-	From 780 to 1041 g/m ² (depending on the pattern)
Stains resistance	-	Sanitized protection (EZ Care) optional
Fire resistance	EN 13501	B-S1 d0
UV resistance	ISO 105-B02	Grade 6
Fungus test	ASTM G21	No Growth after 28 days
Skew and Bow	EN 427	Max 2%
Curling	EN 434:1994	1,5 mm
Release of Formaldehyde	-	Pass (120mg/kg)
Release of Vinyl Chloride	-	Monomer - Pass (<0.2mg/kg)
Sound Absorption		$\alpha_w=0.05$
Release of dangerous substances (SVHC)	xXMCCM161101593	Pass



EN 13501



ISO 105-B02



ASTM G21

NOTE: Being a textile product, this range has a tolerance of 2% asymmetry, known as skew and bow effect. Maximum fraying tolerance of 5 inner-yarns/ml guaranteed. It has all the textile properties and these may suffer variations or changes with time that may affect and alter the colour.