

WOVEN SHEETS

ORIGINAL COLLECTION

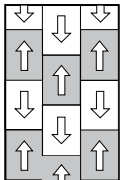
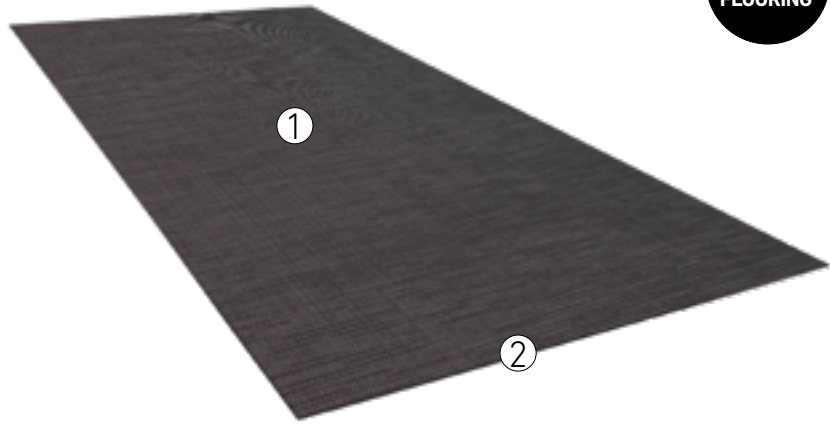
TECHNICAL DATA SHEET



WALLS & FLOORING

- ① Woven Vinyl:
 - 96% PVC,
 - 1,5% Polyester,
 - 2,5% Glassfiber

- ② PVC Rigid with glassfiber reinforce



Proper installation:
Chessboard system combining 2 colours

Characteristics	Test	Woven Sheets (Original Range)
Classification	EN 685	23/33
Dimensions	EN 427	928 x 634 mm
Thickness	EN 430	from 1,40 to 1,80 mm (depending on the pattern)
Weight	EN 430	from 1,63 to 1,82 kg/m ² (depending on the pattern)
Abrasion resistance	EN 660-1: 99	0,068 mm
	EN 660-2: 99	1,80 mm ³
Fire resistance	EN 13501-1	Class BFLs1
Thermal resistance	EN 12664	0,0639 m2 K/W*
Thermal conductivity	EN 12667 (2011)	0,0416 W/m.k
Formaldehyde emission	EN 717-1	E1
UV Resistance	ISO 105 - B02	> Grade 6
Fungus test	ASTM G21	No Growth after 28 days
Skew and Bow	EN 427	Max 2%
Slip/Slide resistance	EN 13893	<0,3
	DIN 51130	R10
Residual Indentation	EN 433:1994	0.08mm
Dimensional Stability	EN 434:1994	0.05% (X + Y direction)
Curling	EN 434:1994	1.5mm
Antistatic Performance	EN 1815	< 2 kV
Castor chair suitability**	EN 985	Continuous use

* Suitable for underfloor heating system ** Suitable for soft polyamide wheels (type W)



EN 433:1994



DIN 51130



EN 13501-1



EN717-1



EN 1815



EN ISO 717-2



ISO 105 - B02



EN 12664



EN 985



ASTM G21

NOTE: Being a textile product, this range has a tolerance of 2% asymmetry, known as skew and bow effect. Maximum fraying tolerance of 5 inner-yarns/ml guaranteed. It has all the textile properties and these may suffer variations or changes with time that may affect and alter the colour.